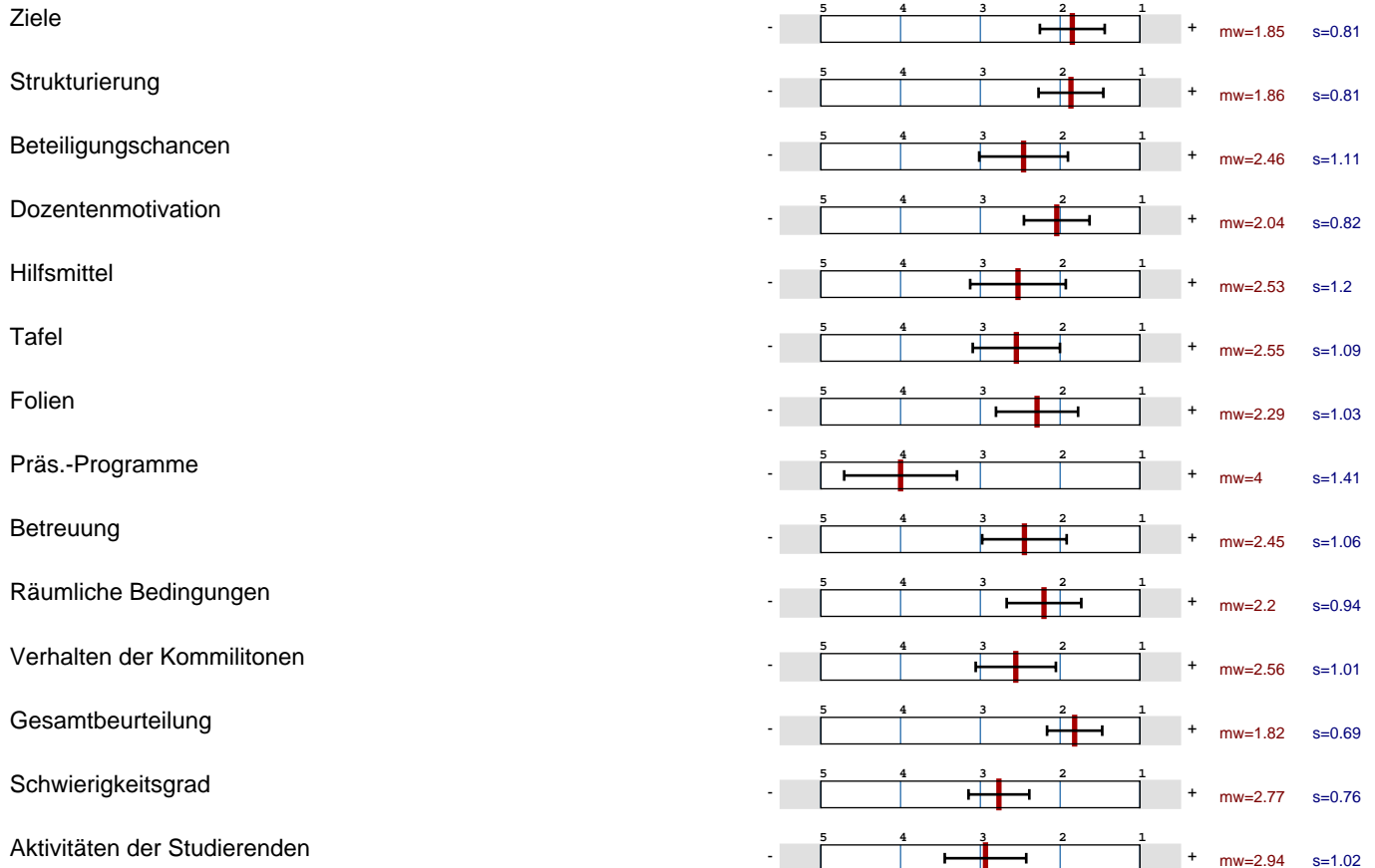


Umfrage VL Sozialpsychologie II

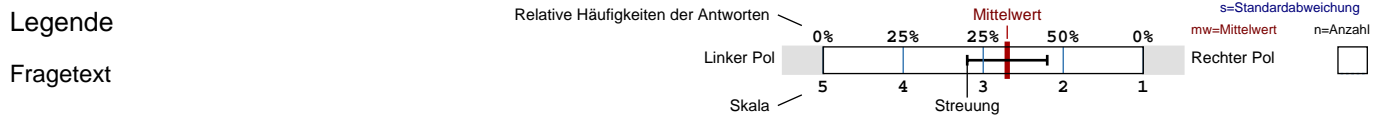
Prof. Dr. Manfred Hassebrauck, Psychologie (FB G), Datenerfassung am 23.06.2004
Fragebogen wup01, SS 2004, es wurden 91 Fragebögen ausgewertet.



Globalwerte



Auswertungsteil der geschlossenen Fragen

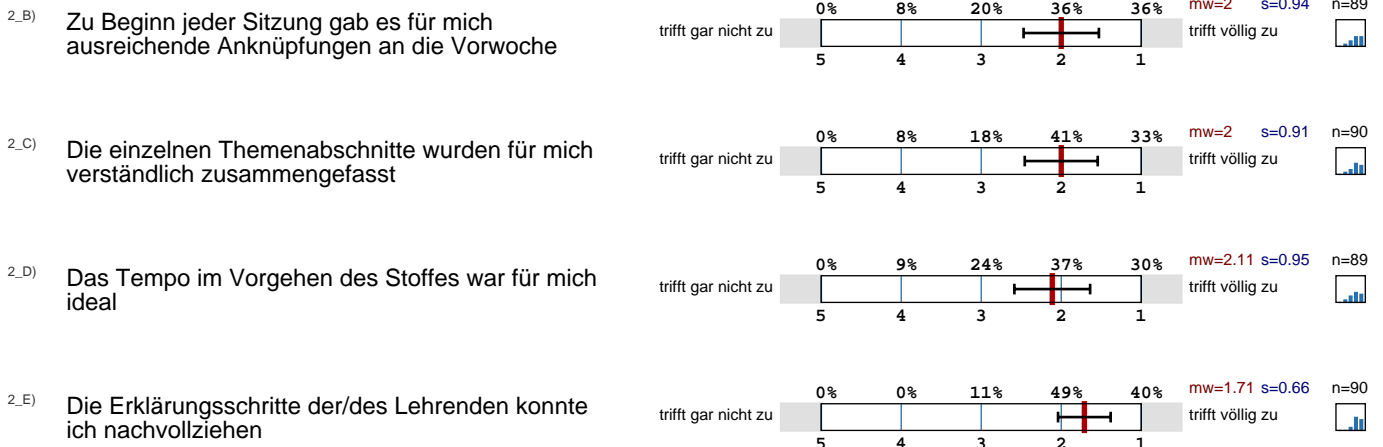


Ziele



Strukturierung

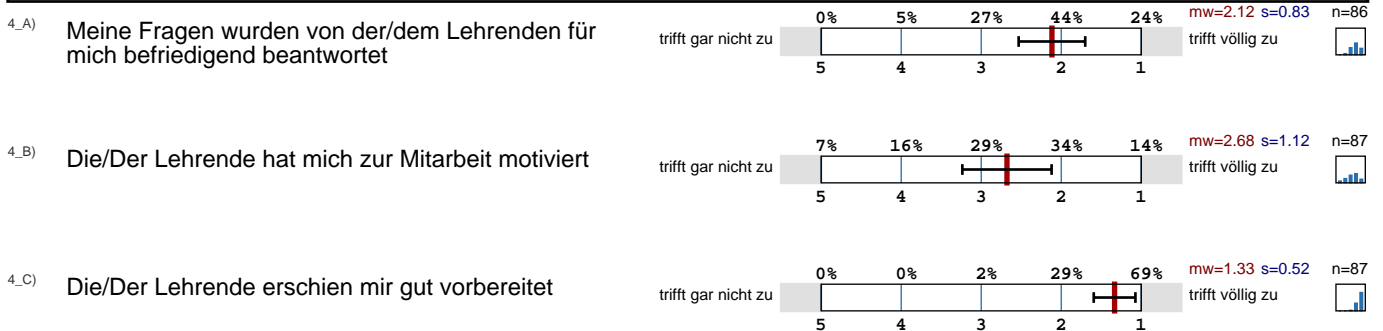




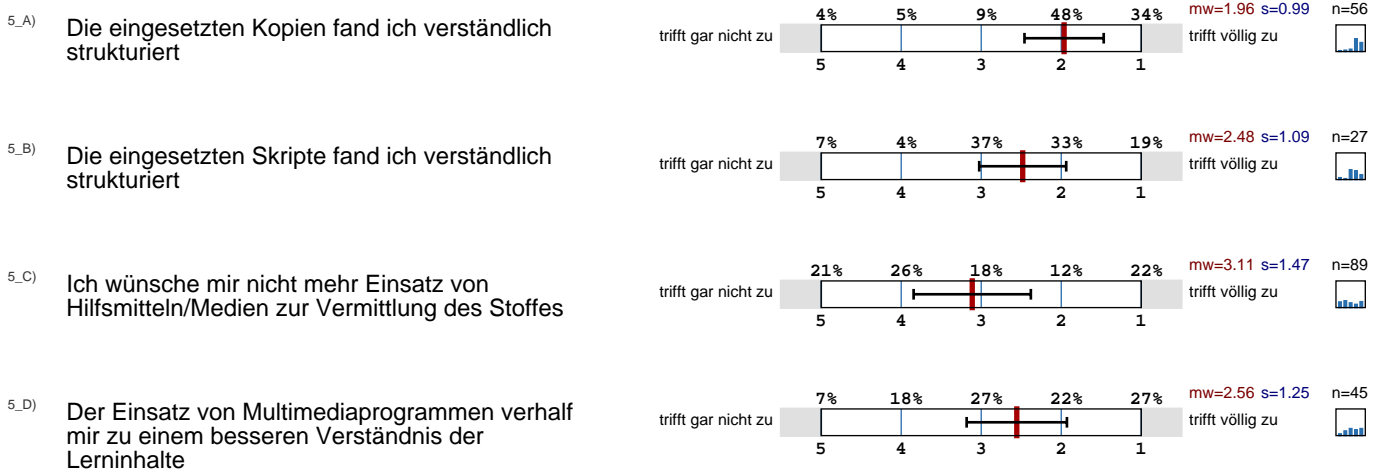
Beteiligungschancen



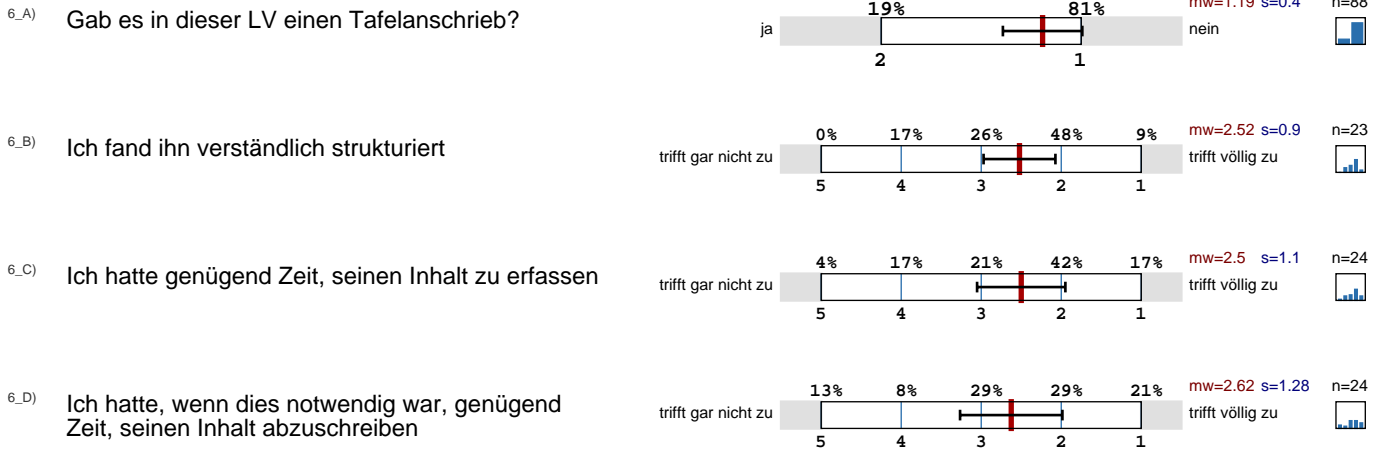
Dozentenmotivation



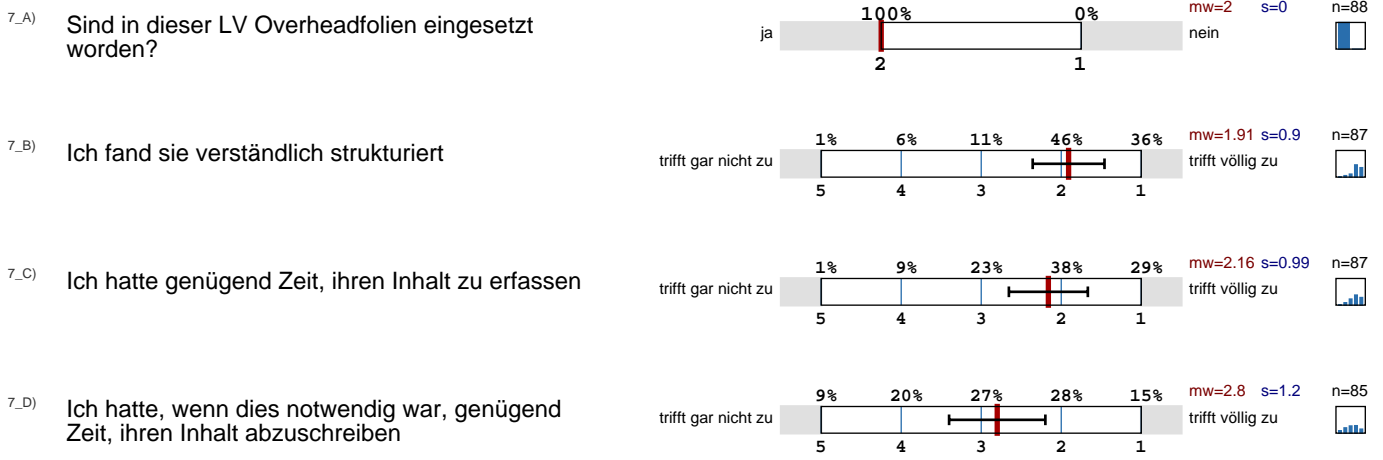
Hilfsmittel



Tafel



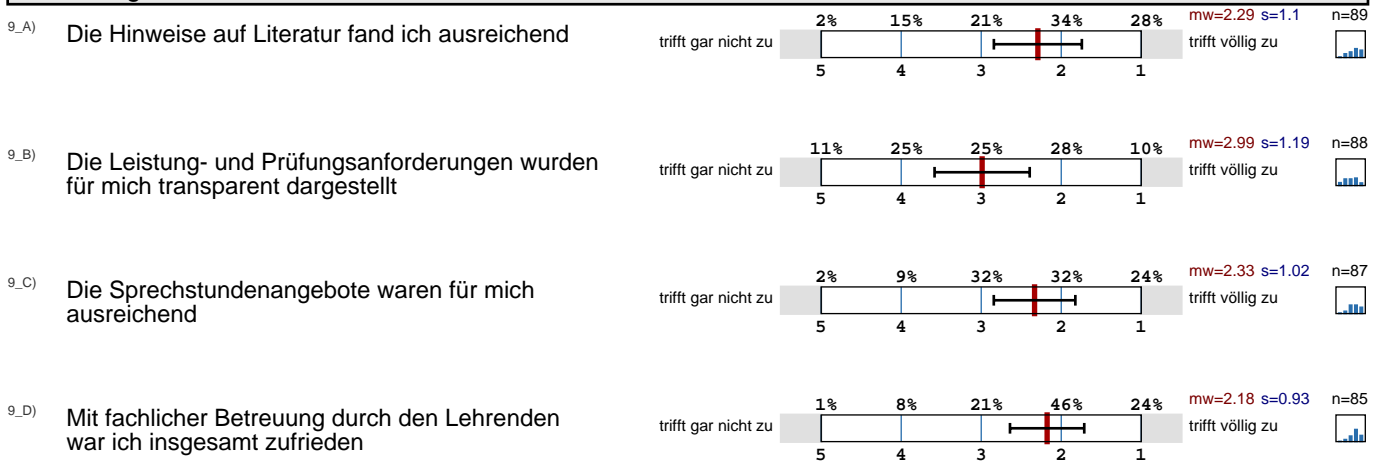
Folien



Präs.-Programme



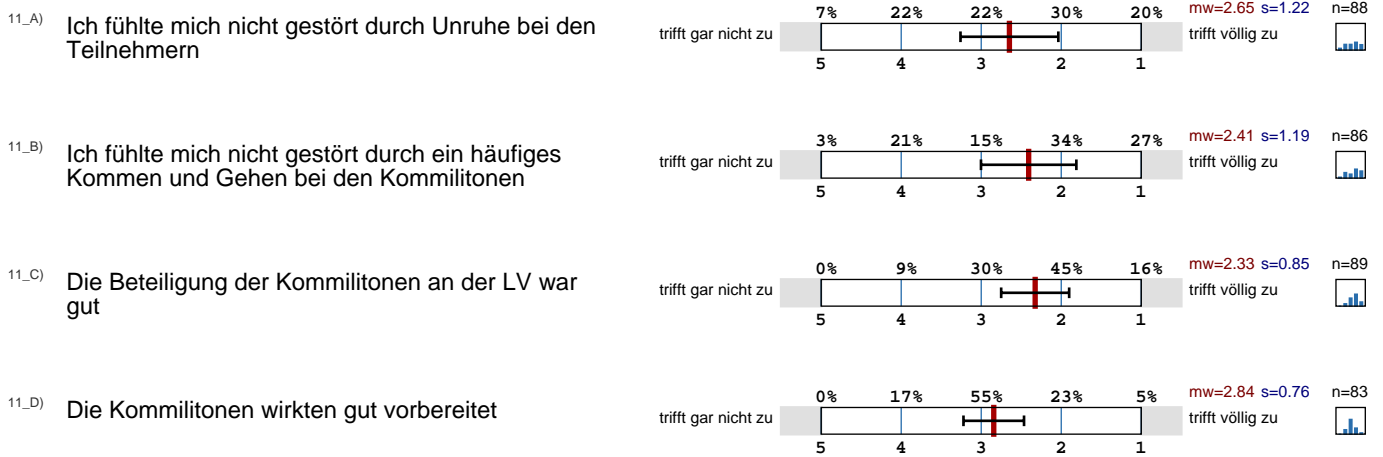
Betreuung



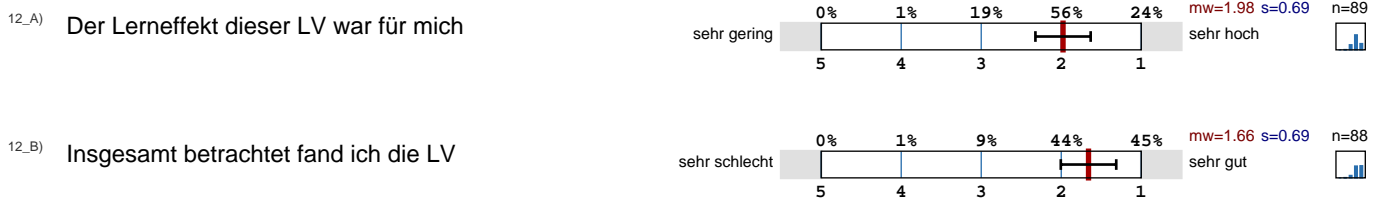
Räumliche Bedingungen



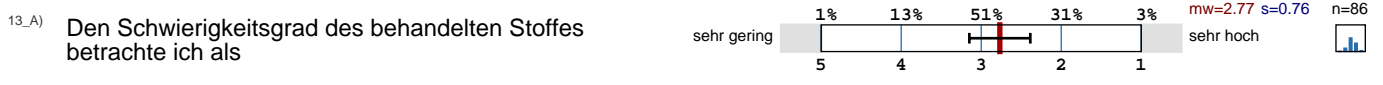
Verhalten der Kommilitonen



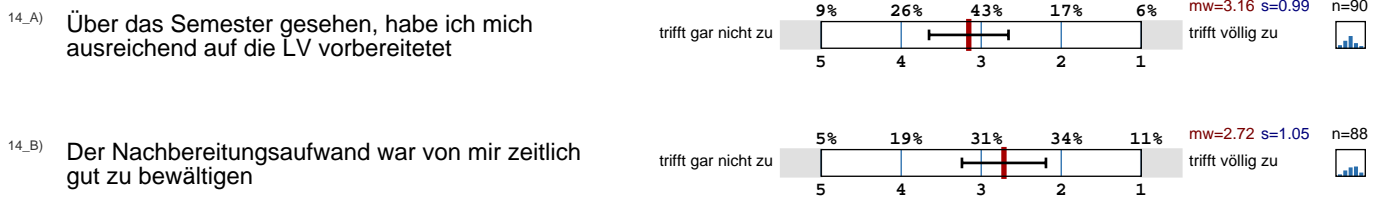
Gesamtbeurteilung



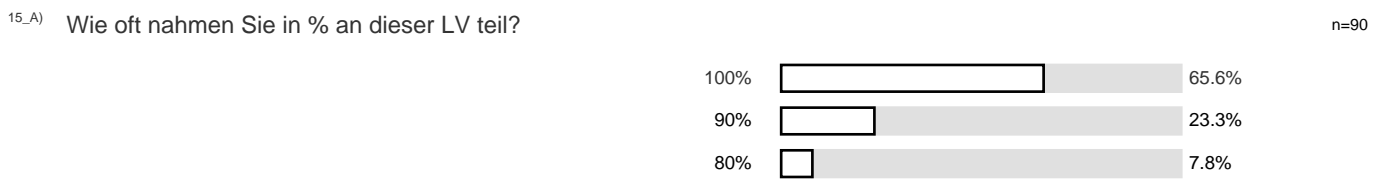
Schwierigkeitsgrad



Aktivitäten der Studierenden



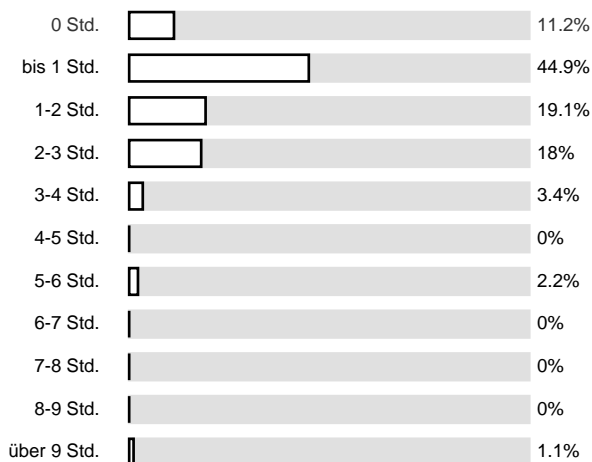
Zeitaufwand





^{15_B)} Wie hoch ist Ihr regelmäßiger wöchentlicher Zeitaufwand zur Vor- und Nachbereitung dieser LV in Stunden?

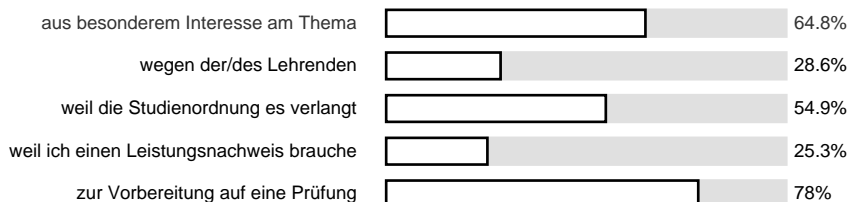
n=89



Motivation

^{16_A)} Ich besuche diese Veranstaltung

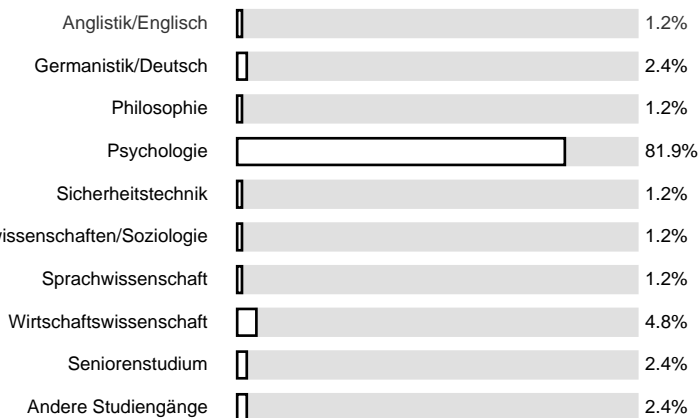
n=91



Studiengang

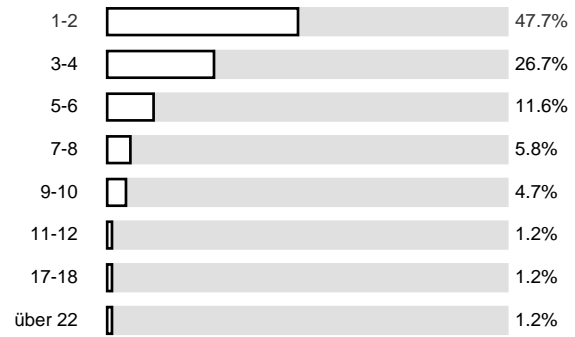
^{17_A)} Bitte die Kennziffer desjenigen Studiengangs bzw. -fachs eintragen, in dessen Zusammenhang Sie diese LV besuchen

n=83



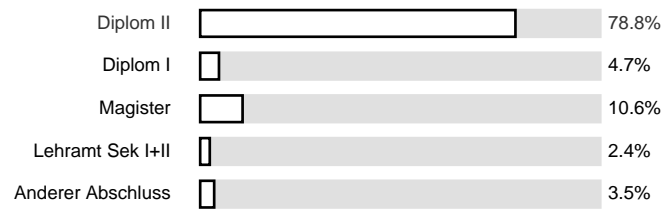
18_A) Fachsemesterzahl

n=86



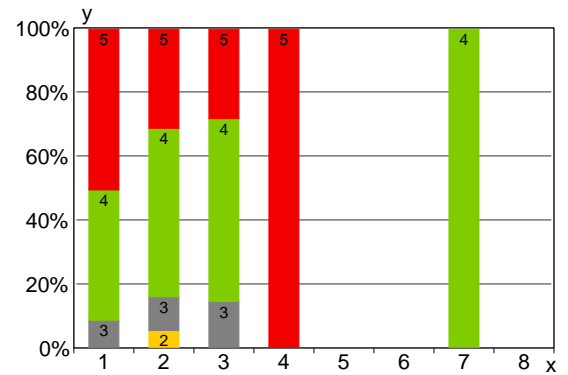
19_A) Geplanter Abschluß

n=85



Zusatzfragen

x	y	1	2	3	4	5	
1		0%	0%	8.5%	40.7%	50.8%	100%
2		0%	5.3%	10.5%	52.6%	31.6%	100%
3		0%	0%	14.3%	57.1%	28.6%	100%
4		0%	0%	0%	0%	100%	100%
5		0%	0%	0%	0%	0%	100%
6		0%	0%	0%	0%	0%	100%
7		0%	0%	0%	100%	0%	100%
8		0%	0%	0%	0%	0%	100%
		0%	1.1%	9.2%	44.8%	44.8%	100%



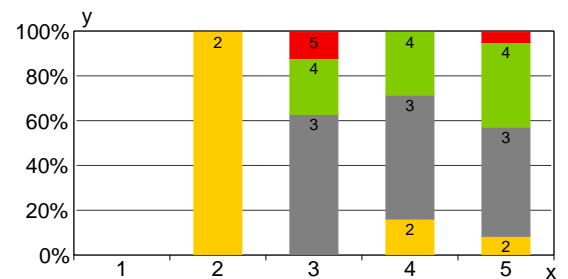
x:
Wie oft nahmen Sie in % an dieser LV teil?

y:
Insgesamt betrachtet fand ich die LV

- 1: 100%
- 2: 90%
- 3: 80%
- 4: 70%
- 5: 60%
- 6: 50%
- 7: 40%
- 8: unter 40%

- 1: sehr schlecht
- 2:
- 3:
- 4:
- 5: sehr gut

x	y	1	2	3	4	5	
1		0%	0%	0%	0%	0%	100%
2		0%	100%	0%	0%	0%	100%
3		0%	0%	62.5%	25%	12.5%	100%
4		0%	15.8%	55.3%	28.9%	0%	100%
5		0%	8.1%	48.6%	37.8%	5.4%	100%
		0%	11.9%	52.4%	32.1%	3.6%	100%



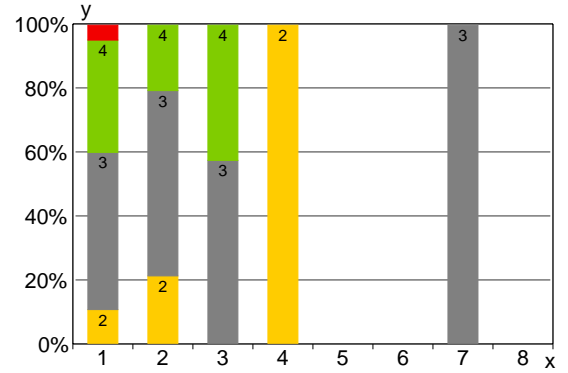
x:
Insgesamt betrachtet fand ich die LV

y:
Den Schwierigkeitsgrad des behandelten Stoffes betrachte ich als

- 1: sehr schlecht
- 2:
- 3:
- 4:
- 5: sehr gut

- 1: sehr gering
- 2:
- 3:
- 4:
- 5: sehr hoch

x	y	1	2	3	4	5	
1		0%	10.5%	49.1%	35.1%	5.3%	100%
2		0%	21.1%	57.9%	21.1%	0%	100%
3		0%	0%	57.1%	42.9%	0%	100%
4		0%	100%	0%	0%	0%	100%
5		0%	0%	0%	0%	0%	100%
6		0%	0%	0%	0%	0%	100%
7		0%	0%	100%	0%	0%	100%
8		0%	0%	0%	0%	0%	100%
		0%	12.9%	51.8%	31.8%	3.5%	100%



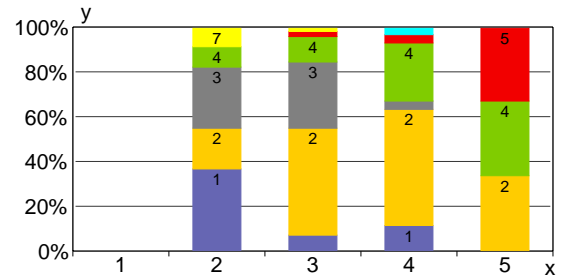
x:
Wie oft nahmen Sie in % an dieser LV teil?

- 1: 100%
- 2: 90%
- 3: 80%
- 4: 70%
- 5: 60%
- 6: 50%
- 7: 40%
- 8: unter 40%

y:
Den Schwierigkeitsgrad des behandelten Stoffes betrachte ich als

- 1: sehr gering
- 2:
- 3:
- 4:
- 5: sehr hoch

x	y	1	2	3	4	5	6	7	8	9	10	11	
1		0%	0%	0%	0%	0%	0%	0%	0%	0%	0%	0%	100%
2		36.4%	18.2%	27.3%	9.1%	0%	0%	9.1%	0%	0%	0%	0%	100%
3		6.8%	47.7%	29.5%	11.4%	2.3%	0%	2.3%	0%	0%	0%	0%	100%
4		11.1%	51.9%	3.7%	25.9%	3.7%	0%	0%	0%	0%	0%	3.7%	100%
5		0%	33.3%	0%	33.3%	33.3%	0%	0%	0%	0%	0%	0%	100%
		11.8%	44.7%	20%	16.5%	3.5%	0%	2.4%	0%	0%	0%	1.2%	100%



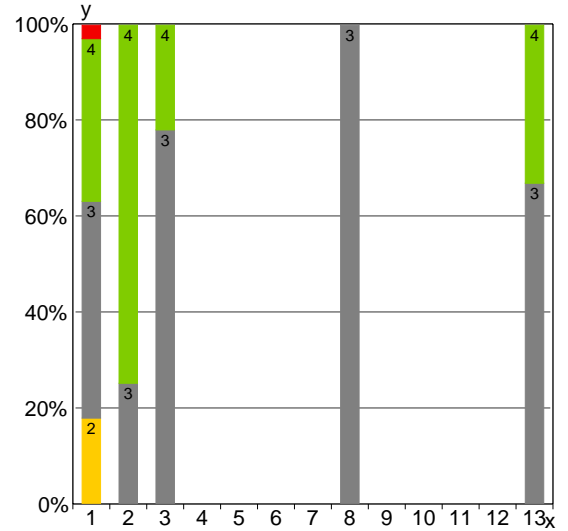
x:
Den Schwierigkeitsgrad des behandelten Stoffes betrachte ich als

- 1: sehr gering
- 2:
- 3:
- 4:
- 5: sehr hoch

y:
Wie hoch ist Ihr regelmäßiger wöchentlicher Zeitaufwand zur Vor- und Nachbereitung dieser LV in Stunden?

- 1: 0 Std.
- 2: bis 1 Std.
- 3: 1-2 Std.
- 4: 2-3 Std.
- 5: 3-4 Std.
- 6: 4-5 Std.
- 7: 5-6 Std.
- 8: 6-7 Std.
- 9: 7-8 Std.
- 10: 8-9 Std.
- 11: über 9 Std.

x	y	1	2	3	4	5	
1		0%	17.7%	45.2%	33.9%	3.2%	100%
2		0%	0%	25%	75%	0%	100%
3		0%	0%	77.8%	22.2%	0%	100%
4		0%	0%	0%	0%	0%	100%
5		0%	0%	0%	0%	0%	100%
6		0%	0%	0%	0%	0%	100%
7		0%	0%	0%	0%	0%	100%
8		0%	0%	100%	0%	0%	100%
9		0%	0%	0%	0%	0%	100%
10		0%	0%	0%	0%	0%	100%
11		0%	0%	0%	0%	0%	100%
12		0%	0%	0%	0%	0%	100%
13		0%	0%	66.7%	33.3%	0%	100%
		0%	13.8%	50%	33.8%	2.5%	100%



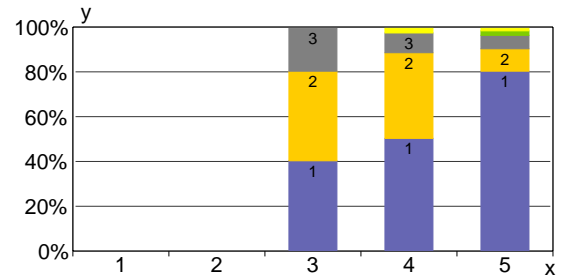
x:
Geplanter Abschluß

- 1: Diplom II
- 2: Diplom I
- 3: Magister
- 4: Bachelor
- 5: Master
- 6: Lehramt Sek. I
- 7: Lehramt Sek. II
- 8: Lehramt Sek I+II
- 9: Lehramt Primarstufe
- 10: Lehramt GHR
- 11: Lehramt GYM
- 12: Lehramt Berufskolleg
- 13: Anderer Abschluss

y:
Den Schwierigkeitsgrad des behandelten Stoffes betrachte ich als

- 1: sehr gering
- 2:
- 3:
- 4:
- 5: sehr hoch

x	y	1	2	3	4	5	6	7	8	
1		0%	0%	0%	0%	0%	0%	0%	0%	100%
2		0%	0%	0%	0%	0%	0%	0%	0%	100%
3		40%	40%	20%	0%	0%	0%	0%	0%	100%
4		50%	38.2%	8.8%	0%	0%	0%	2.9%	0%	100%
5		80%	10%	6%	2%	0%	0%	2%	0%	100%
		66.3%	22.5%	7.9%	1.1%	0%	0%	2.2%	0%	100%



x:
Mir erschien die LV klar strukturiert

- 1: trifft gar nicht zu
- 2:
- 3:
- 4:
- 5: trifft völlig zu

y:
Wie oft nahmen Sie in % an dieser LV teil?

- 1: 100%
- 2: 90%
- 3: 80%
- 4: 70%
- 5: 60%
- 6: 50%
- 7: 40%
- 8: unter 40%

	Profillinie
-----------------------------------------------------------------------------------	-------------



