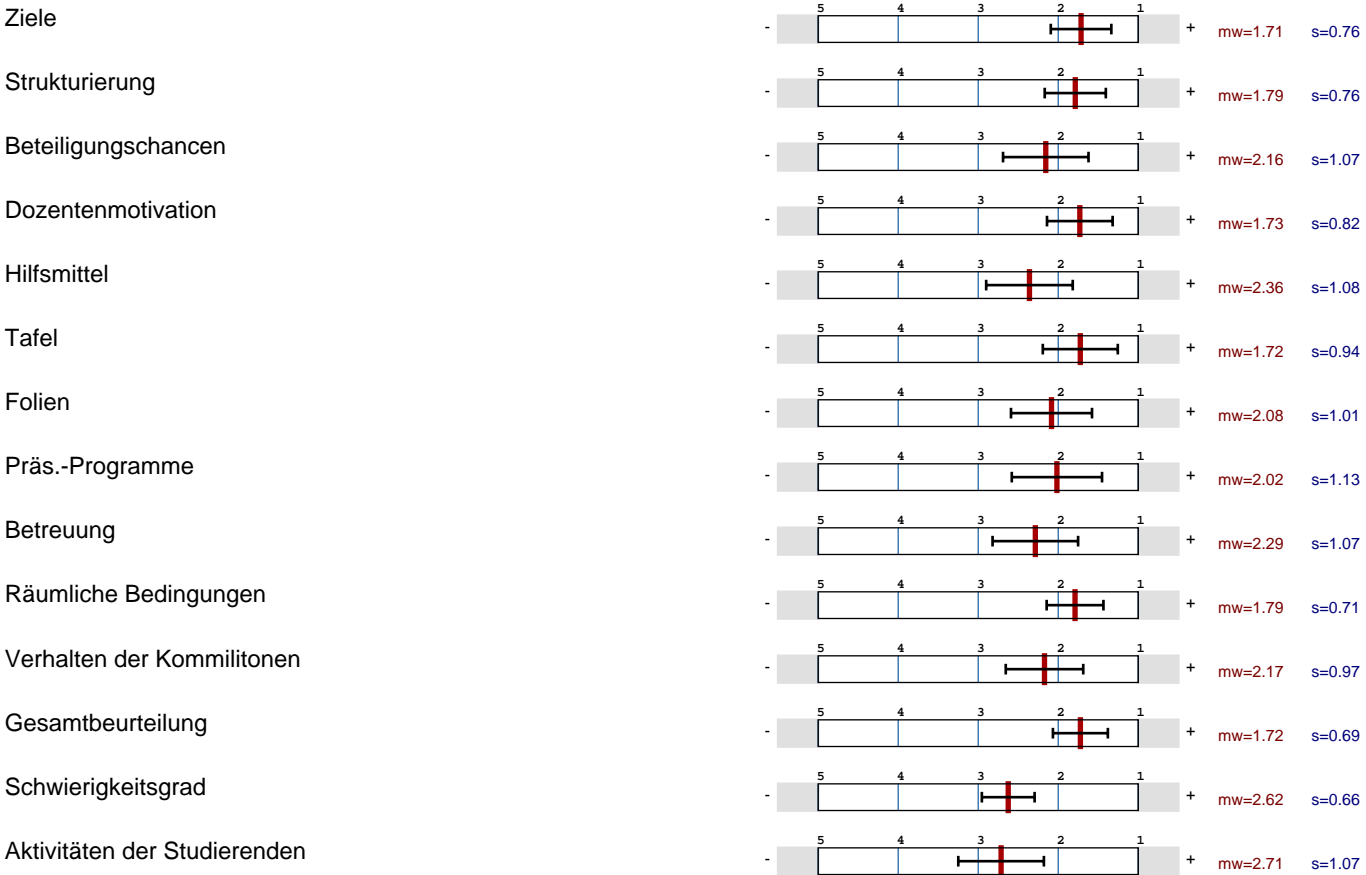


Umfrage VI Sozialpsychologie

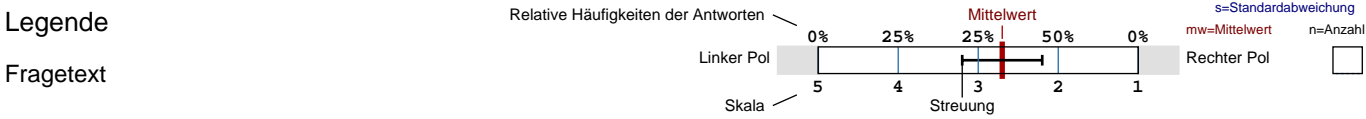
Prof. Dr. Manfred Hassebrauck, Psychologie (FB G), Datenerfassung am 21.01.2004
Fragebogen wup01, Sozialpsychologie-VI, es wurden 73 Fragebögen ausgewertet.



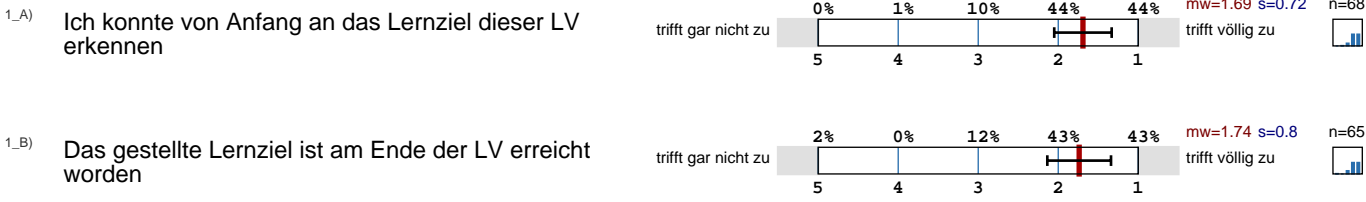
Globalwerte



Auswertungsteil der geschlossenen Fragen

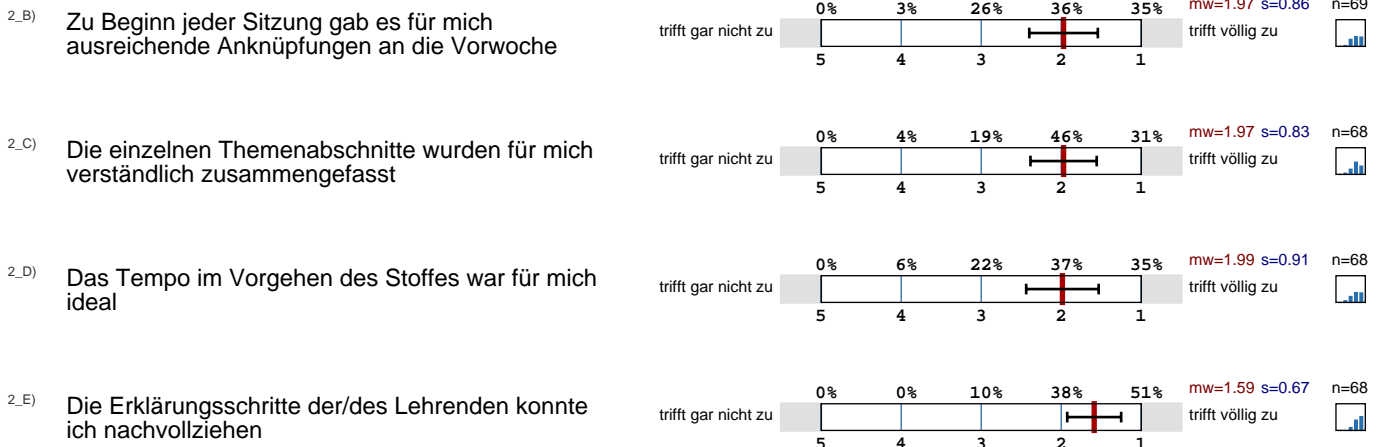


Ziele



Strukturierung





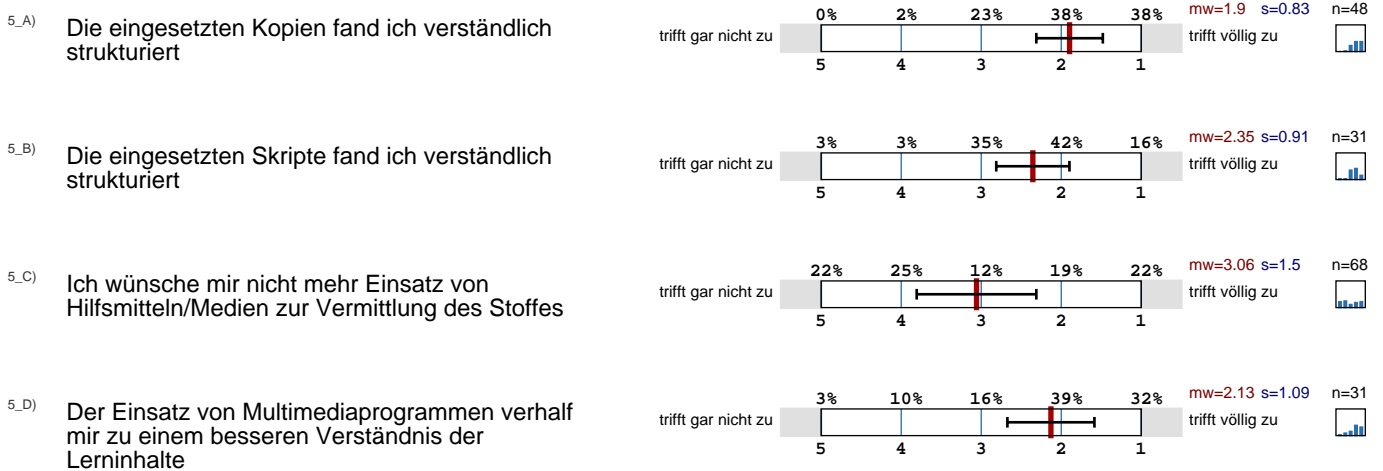
Beteiligungschancen



Dozentenmotivation



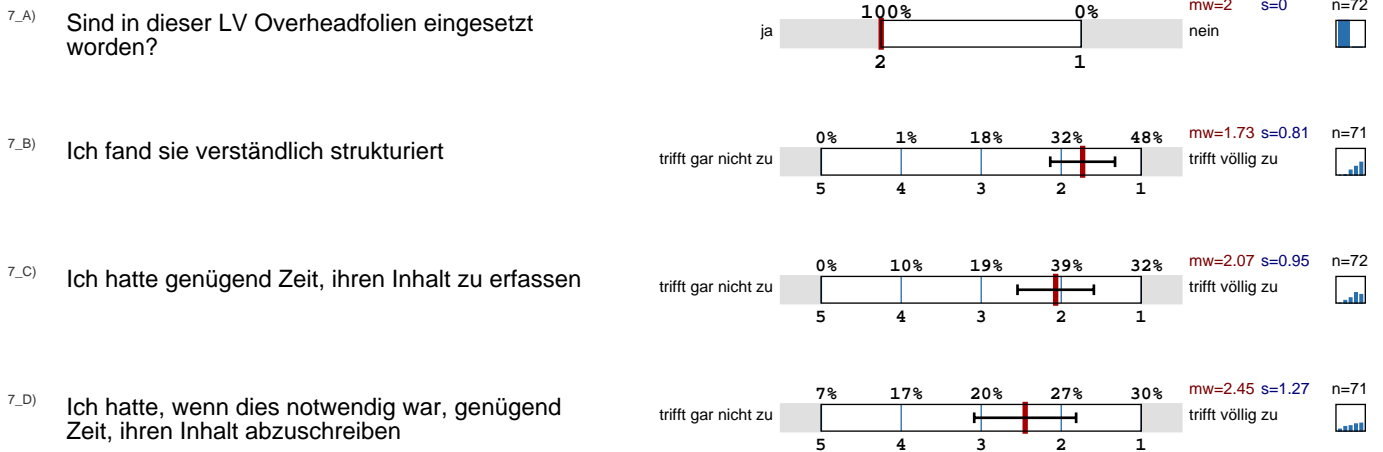
Hilfsmittel



Tafel



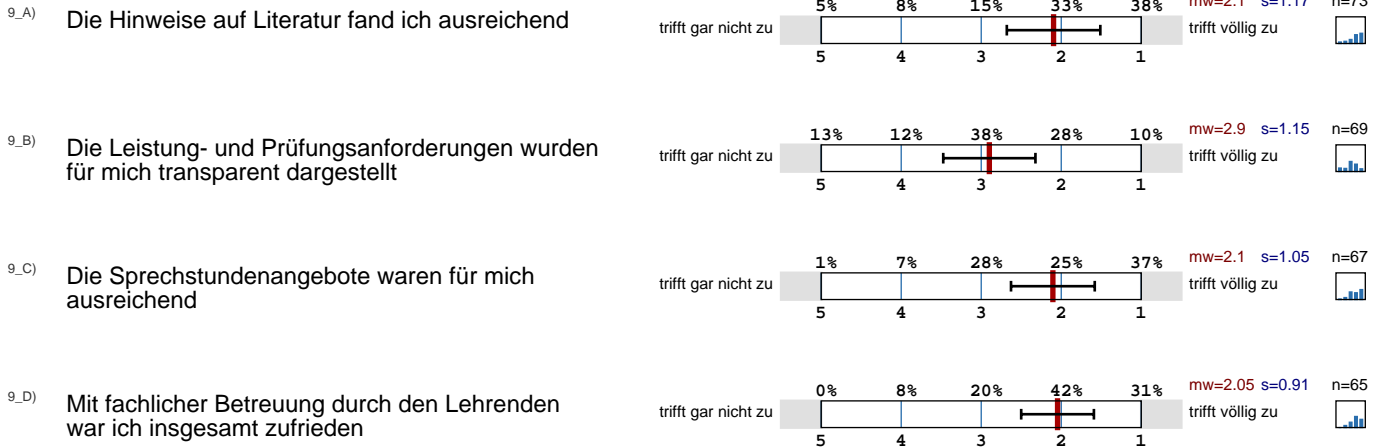
Folien



Präs.-Programme



Betreuung



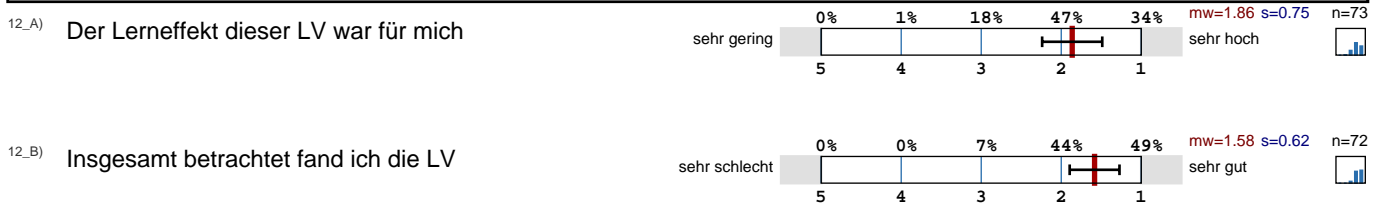
Räumliche Bedingungen



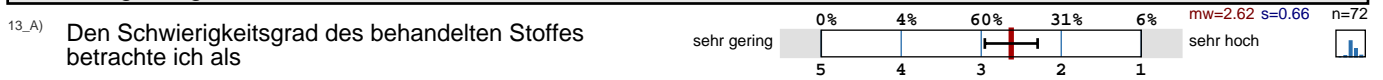
Verhalten der Kommilitonen



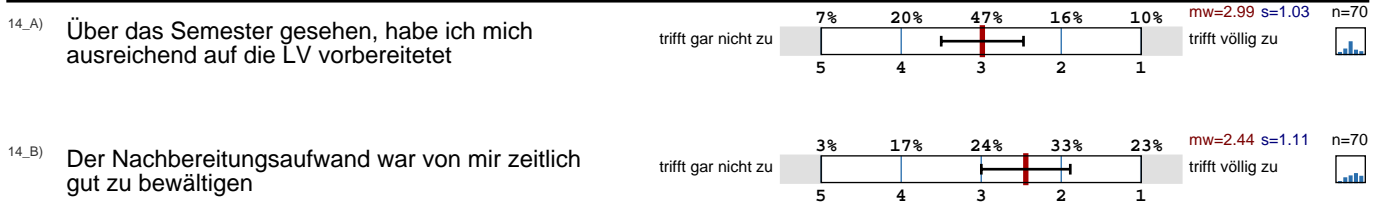
Gesamtbeurteilung



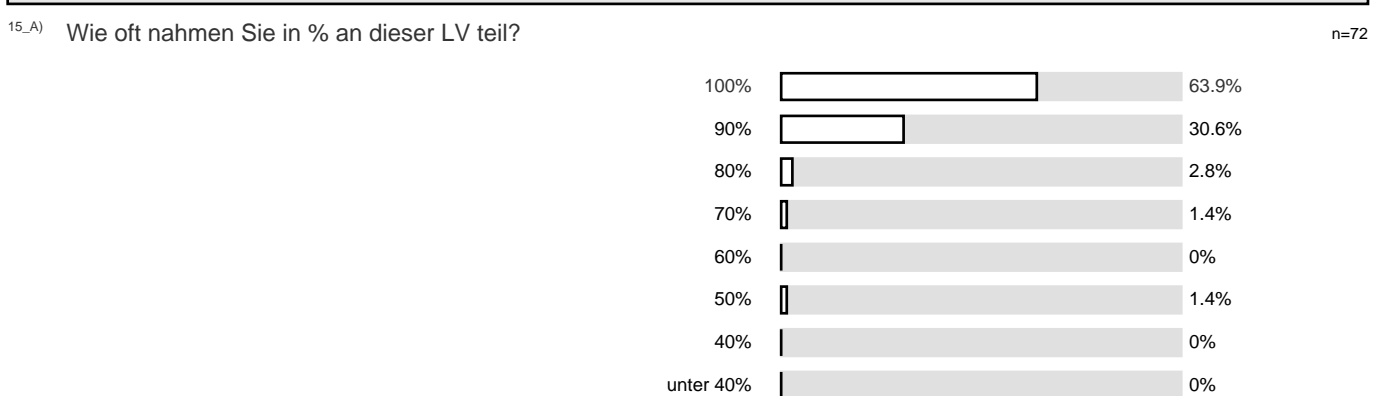
Schwierigkeitsgrad



Aktivitäten der Studierenden

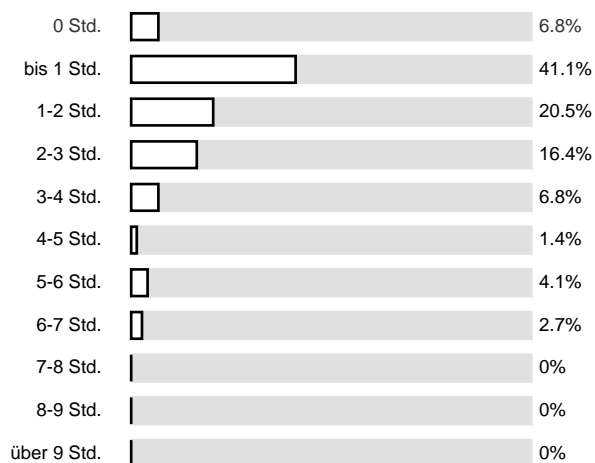


Zeitaufwand



^{15_B)} Wie hoch ist Ihr regelmäßiger wöchentlicher Zeitaufwand zur Vor- und Nachbereitung dieser LV in Stunden?

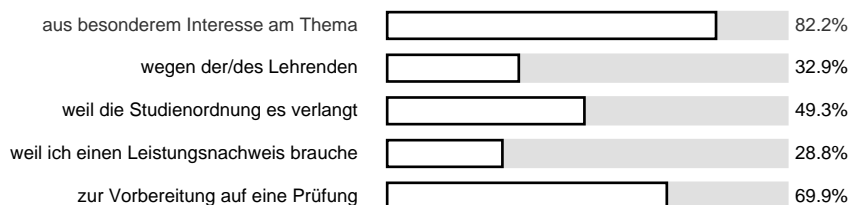
n=73



Motivation

^{16_A)} Ich besuche diese Veranstaltung

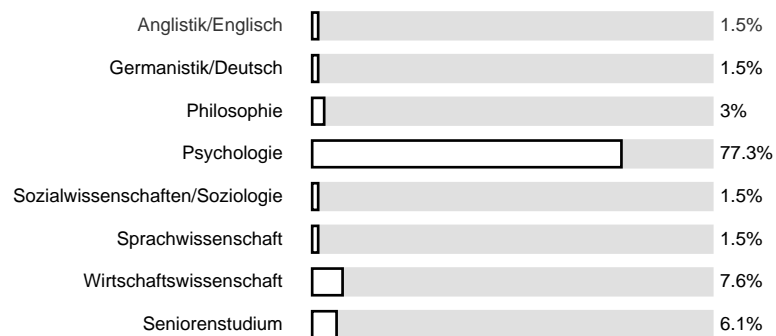
n=73



Studiengang

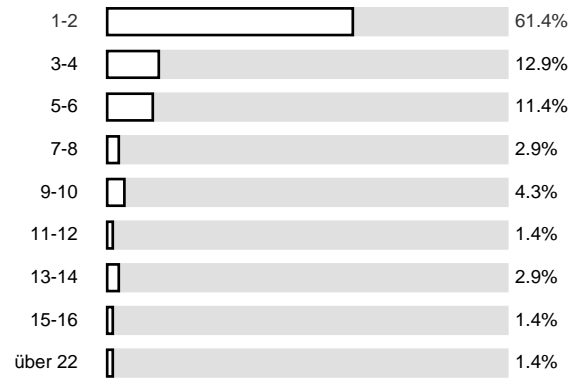
^{17_A)} Bitte die Kennziffer desjenigen Studiengangs bzw. -fachs eintragen, in dessen Zusammenhang Sie diese LV besuchen

n=66



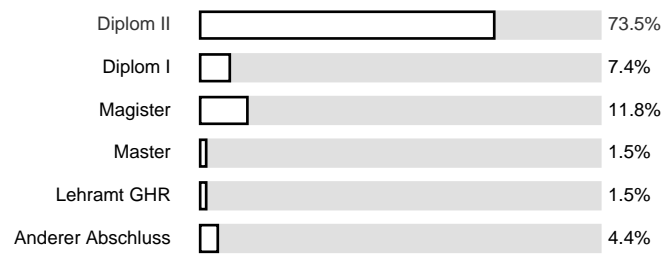
18_A) Fachsemesterzahl

n=70



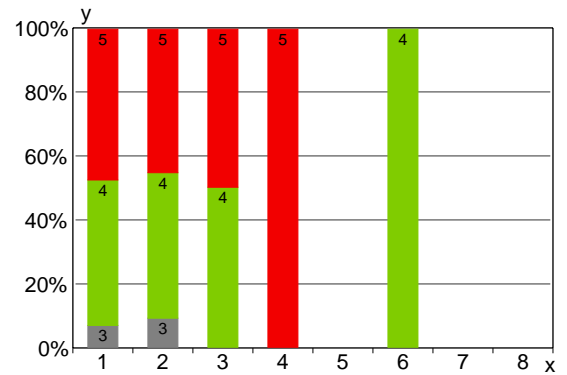
19_A) Geplanter Abschluß

n=68



Zusatzfragen

x	y	1	2	3	4	5	
1		0%	0%	6.8%	45.5%	47.7%	100%
2		0%	0%	9.1%	45.5%	45.5%	100%
3		0%	0%	0%	50%	50%	100%
4		0%	0%	0%	0%	100%	100%
5		0%	0%	0%	0%	0%	100%
6		0%	0%	0%	100%	0%	100%
7		0%	0%	0%	0%	0%	100%
8		0%	0%	0%	0%	0%	100%
		0%	0%	7.1%	45.7%	47.1%	100%



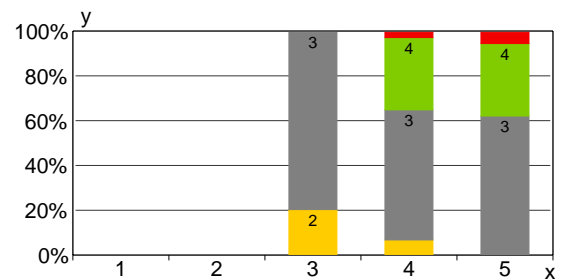
x:
Wie oft nahmen Sie in % an dieser LV teil?

- 1: 100%
- 2: 90%
- 3: 80%
- 4: 70%
- 5: 60%
- 6: 50%
- 7: 40%
- 8: unter 40%

y:
Insgesamt betrachtet fand ich die LV

- 1: sehr schlecht
- 2:
- 3:
- 4:
- 5: sehr gut

x	y	1	2	3	4	5	
1		0%	0%	0%	0%	0%	100%
2		0%	0%	0%	0%	0%	100%
3		0%	20%	80%	0%	0%	100%
4		0%	6.5%	58.1%	32.3%	3.2%	100%
5		0%	0%	61.8%	32.4%	5.9%	100%
		0%	4.3%	61.4%	30%	4.3%	100%



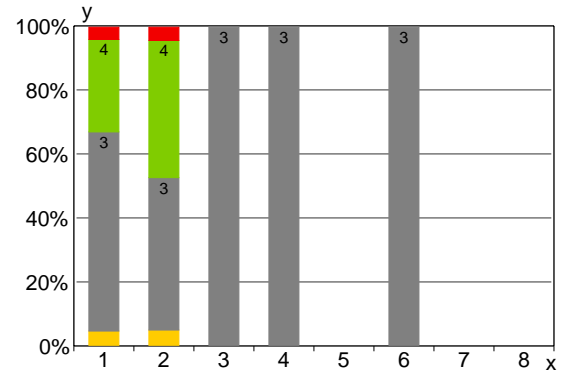
x:
Insgesamt betrachtet fand ich die LV

- 1: sehr schlecht
- 2:
- 3:
- 4:
- 5: sehr gut

y:
Den Schwierigkeitsgrad des behandelten Stoffes betrachte ich als

- 1: sehr gering
- 2:
- 3:
- 4:
- 5: sehr hoch

x	y	1	2	3	4	5	
1		0%	4.4%	62.2%	28.9%	4.4%	100%
2		0%	4.8%	47.6%	42.9%	4.8%	100%
3		0%	0%	100%	0%	0%	100%
4		0%	0%	100%	0%	0%	100%
5		0%	0%	0%	0%	0%	100%
6		0%	0%	100%	0%	0%	100%
7		0%	0%	0%	0%	0%	100%
8		0%	0%	0%	0%	0%	100%
		0%	4.3%	60%	31.4%	4.3%	100%



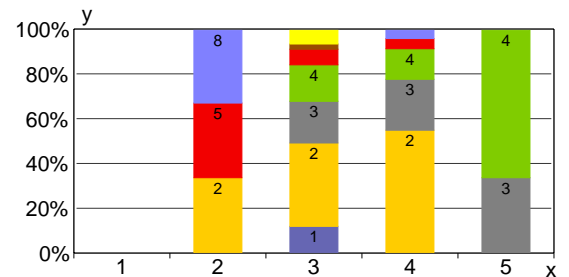
x:
Wie oft nahmen Sie in % an dieser LV teil?

- 1: 100%
- 2: 90%
- 3: 80%
- 4: 70%
- 5: 60%
- 6: 50%
- 7: 40%
- 8: unter 40%

y:
Den Schwierigkeitsgrad des behandelten Stoffes betrachte ich als

- 1: sehr gering
- 2:
- 3:
- 4:
- 5: sehr hoch

x	y	1	2	3	4	5	6	7	8	9	10	11	
1		0%	0%	0%	0%	0%	0%	0%	0%	0%	0%	0%	100%
2		0%	33.3%	0%	0%	33.3%	0%	0%	33.3%	0%	0%	0%	100%
3		11.6%	37.2%	18.6%	16.3%	7%	2.3%	7%	0%	0%	0%	0%	100%
4		0%	54.5%	22.7%	13.6%	4.5%	0%	0%	4.5%	0%	0%	0%	100%
5		0%	0%	33.3%	66.7%	0%	0%	0%	0%	0%	0%	0%	100%
		7%	40.8%	19.7%	16.9%	7%	1.4%	4.2%	2.8%	0%	0%	0%	100%



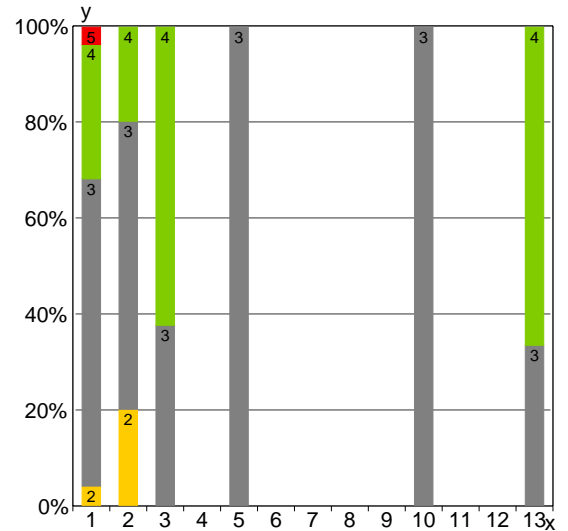
x:
Den Schwierigkeitsgrad des behandelten Stoffes betrachte ich als

- 1: sehr gering
- 2:
- 3:
- 4:
- 5: sehr hoch

y:
Wie hoch ist Ihr regelmäßiger wöchentlicher Zeitaufwand zur Vor- und Nachbereitung dieser LV in Stunden?

- 1: 0 Std.
- 2: bis 1 Std.
- 3: 1-2 Std.
- 4: 2-3 Std.
- 5: 3-4 Std.
- 6: 4-5 Std.
- 7: 5-6 Std.
- 8: 6-7 Std.
- 9: 7-8 Std.
- 10: 8-9 Std.
- 11: über 9 Std.

x	y	1	2	3	4	5	
1		0%	4%	64%	28%	4%	100%
2		0%	20%	60%	20%	0%	100%
3		0%	0%	37.5%	62.5%	0%	100%
4		0%	0%	0%	0%	0%	100%
5		0%	0%	100%	0%	0%	100%
6		0%	0%	0%	0%	0%	100%
7		0%	0%	0%	0%	0%	100%
8		0%	0%	0%	0%	0%	100%
9		0%	0%	0%	0%	0%	100%
10		0%	0%	100%	0%	0%	100%
11		0%	0%	0%	0%	0%	100%
12		0%	0%	0%	0%	0%	100%
13		0%	0%	33.3%	66.7%	0%	100%
		0%	4.4%	60.3%	32.4%	2.9%	100%



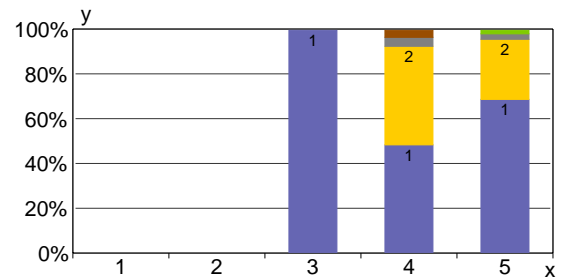
x:
Geplanter Abschluß

- 1: Diplom II
- 2: Diplom I
- 3: Magister
- 4: Bachelor
- 5: Master
- 6: Lehramt Sek. I
- 7: Lehramt Sek. II
- 8: Lehramt Sek I+II
- 9: Lehramt Primarstufe
- 10: Lehramt GHR
- 11: Lehramt GYM
- 12: Lehramt Berufskolleg
- 13: Anderer Abschluss

y:
Den Schwierigkeitsgrad des behandelten Stoffes betrachte ich als

- 1: sehr gering
- 2:
- 3:
- 4:
- 5: sehr hoch

x	y	1	2	3	4	5	6	7	8	
1		0%	0%	0%	0%	0%	0%	0%	0%	100%
2		0%	0%	0%	0%	0%	0%	0%	0%	100%
3		100%	0%	0%	0%	0%	0%	0%	0%	100%
4		48%	44%	4%	0%	0%	4%	0%	0%	100%
5		68.3%	26.8%	2.4%	2.4%	0%	0%	0%	0%	100%
		61.8%	32.4%	2.9%	1.5%	0%	1.5%	0%	0%	100%



x:
Mir erschien die LV klar strukturiert

- 1: trifft gar nicht zu
- 2:
- 3:
- 4:
- 5: trifft völlig zu

y:
Wie oft nahmen Sie in % an dieser LV teil?

- 1: 100%
- 2: 90%
- 3: 80%
- 4: 70%
- 5: 60%
- 6: 50%
- 7: 40%
- 8: unter 40%

	Profillinie
---	-------------



